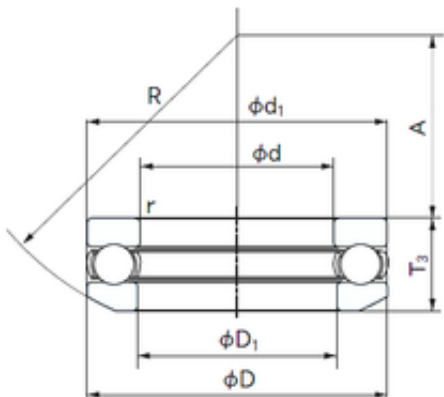




Bearing Rolamentos do Brasil Ltda.

NACHI 53420 thrust ball bearings

Bearing No. 53420



53420 Bearing 2D drawings and 3D CAD models

Size	100x210x90 mm
Bore Diameter	100 mm
Outer Diameter	210 mm
Width	90 mm
d	100 mm
D	210 mm
T	90 mm
d1	205 mm
r min.	3 mm
A	50 mm
D1	103 mm
R	160 mm
Weight	14.5 Kg
Basic dynamic load rating (C)	345 kN
Basic static load rating (C0)	895 kN
(Grease) Lubrication Speed	710 r/min