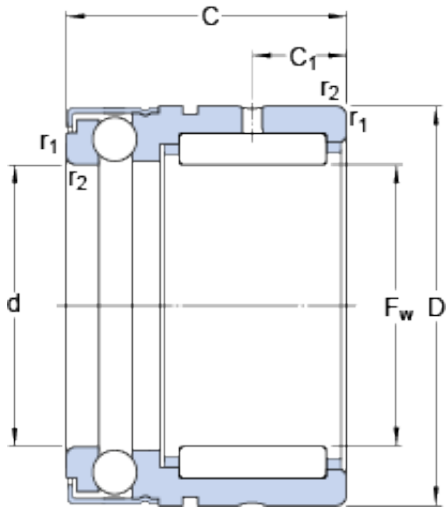




Bearing Rolamentos do Brasil Ltda.



NX 20 Z Bearing 2D drawings and 3D CAD models

SKF NX 20 Z cylindrical roller bearings

Bearing No. NX 20 Z

Size	30x20x28 mm
Bore Diameter	30 mm
Outer Diameter	20 mm
Width	28 mm
F_w	20 mm
D	30 mm
C	28 mm
C_1	8 mm
d	20 mm
$r_{1,2}$ - min.	0.3 mm
d_a - min.	25 mm
D_a - max.	28 mm
C_a	12.2 mm
r_a - max.	0.3 mm
d_i	17 mm
F	20 mm
B_i	16 mm
Basic dynamic load rating, radial direction - C	13.2 kN
Basic static load rating, radial direction - C_0	19.3 kN
Basic dynamic load rating, axial direction - C	7.8 kN
Basic static load rating, axial direction - C_0	17.3 kN
Fatigue load limit, radial direction - P_u	2.3 kN



Bearing Rolamentos do Brasil Ltda.

Fatigue load limit, axial direction - P_u	0.64 kN
Reference speed	6300 r/min
Limiting speed	4500 r/min
Mass bearing	0.068 kg
Inner ring	IR 17x20x16
Category	Roller Bearings
Inventory	0.0
Manufacturer Name	SKF
Minimum Buy Quantity	N/A
Weight / Kilogram	0.074
Product Group	B04144
F_w	20 mm
C_1	8 mm
$r_{1,2}$ min.	0.3 mm
d_a min.	25 mm
D_a max.	28 mm
C_a	12.2 mm
r_a max.	0.3 mm
d_i	17 mm
B_i	16 mm
Basic dynamic load rating, radial direction C	13.2 kN
Basic static load rating, radial direction C_0	19.3 kN
Basic dynamic load rating, axial direction C	7.8 kN
Basic static load rating, axial direction C_0	17.3 kN
Fatigue load limit, radial direction P_u	2.28 kN
Fatigue load limit, axial direction P_u	0.64 kN
Minimum axial load factor	0.0016



Bearing Rolamentos do Brasil Ltda.

A	
Snap ring	SW 30